

Meetings & Conferences in the countryside.



riverside

Seminar- und Eventhotel

riverside

Spinnerei-Lettenstrasse
8192 Zweidlen-
Glattfelden

T +41 43 500 92 92
www.riverside.ch



Are you looking for a special location for your conference or meeting? With ambience and style? Look no further!

The former yarn-spinning factory combines nostalgia and innovation to create a unique atmosphere where people meet, network and develop new ideas. The riverside offers a wide range of opportunities to realise successful conferences, workshops, trainings or events.

Facts & Figures

- ✓ 450 capacity
- ✓ 96 hotel rooms
- ✓ 10 Bowling alleys
- ✓ 1 Car exhibition
- ✓ 300 free of charge parking spaces
- ✓ 26 Meeting rooms
- ✓ 3 Restaurants
- ✓ Shuttle Service

The Event team is happy to support you in planning your conference or meeting from original concepts through to a successful performance on the day.



Pascal Müller
Head of Meeting & Events
seminare@riverside.ch
T +41 43 500 92 92



Meetings in the countryside

The Greenday Delegate Rate includes all relevant services for a successful meeting.

Greenday ½-Day Delegate Rate

CHF 95 p.P. / day

Meeting room with natural daylight

1 Projector & screen or LCD screen

1 Flipchart

1 Pinboard

1 Moderation kit

1 Coffee break
(coffee, tea, orange juice, fruit basket and bread rolls or pastries)

3 course lunch menu incl. mineral water and coffee

Mineral water inside the meeting room (half day)

Free WIFI: high speed internet access with individual login (50Mbits/s)

Free of charge parking spaces for all delegates

Technical support & conference team onsite to support you

Greenday Delegate Rate

from CHF 125 p.P. / day

Bestseller

Meeting room with natural daylight

1 Projector & screen or LCD screen

1 Flipchart

1 Pinboard

1 Moderation kit

2 Coffee breaks
(coffee, tea, orange-juice, fruit basket, bread rolls in the morning, pastries in the afternoon)

3 course lunch menu incl. mineral water and coffee

Mineral water inside the meeting room (full day)

Free WIFI: high speed internet access with individual login (50Mbits/s)

Free of charge parking spaces for all delegates

Technical support & conference team onsite to support you

Greenday Light Delegate Rate

CHF 110 p.P. / day

Meeting room with natural daylight

1 Projector & screen or LCD screen

-

-

-

2 Coffee breaks
(coffee, tea, orange-juice, fruit basket, bread rolls in the morning and pastries in the afternoon)

lunch (only main course, without starter + dessert) incl. mineral water and coffee

Mineral water inside the meeting room (full day)

Free WIFI: high speed internet access with individual login (50Mbits/s)

Free of charge parking spaces for all delegates

Technical support & conference team onsite to support you

Audio/Visual Equipment

Conference technology

Projector & screen or LCD screen, 1 flipchart, 1 pinboard,
1 moderation kit, pads and pens available in each meeting room
and included in the Daily Delegate Rate. Additional AV equipment
available upon request.

Additional equipment – charges per day/ item

| | |
|------------------------------------|-----------|
| - Pinboard | CHF 30.– |
| (covered with paper on both sides) | CHF 35.– |
| - Flipchart with paper & pens | CHF 30.– |
| - Moderation kit | CHF 40.– |
| - Presenter incl. laser pointer | CHF 15.– |
| - Lectern | CHF 20.– |
| - Laptop | CHF 100.– |
| - Overhead projector | CHF 50.– |
| - Projector | CHF 150.– |

Audio/Visual Equipment

| | |
|---|--------------|
| - Microphones (max. 4 simultaneously) at “Spinnereisaal” | je CHF 150.– |
| - Microphone system with 4 microphones and mixer console | CHF 750.– |
| - Conference telephone | CHF 120.– |
| - Microphones in all other meeting rooms or for more than 4 microphones – price upon request | |

Miscellaneous

Above listed prices apply to riverside equipment. All equipment rented externally
is subject to the third party supplier’s prices.

Additional logistical services are to be agreed and arranged prior to the event
and charged based on consumption. Technical support or setup changes on the
day will be charged at CHF 100.00 per hour.

Our meeting rooms

unique and versatile with natural daylight



Classroom



U shape



Theatre



Block table

Spinnereisaal 1+2

up to 335 persons | 310 m²



130

tbd

335

tbd

▶ Double projection

▶ Integrated 4 channel microphone system, sound system

Spinnereisaal 1

up to 95 persons | 128 m²



36

20

95

30

▶ Projector and screen

▶ Sound system

Spinnereisaal 2

up to 170 persons | 189 m²



72

28

170

50

▶ Double projection

▶ Integrated 4 channel microphone system, sound system

Glatt 1+2

up to 88 persons | 109 m²



48

24

88

▶ Projector and screen
57" LCD Screen

▶ Sound system

Our meeting rooms

unique and versatile with natural daylight



Classroom



U shape



Theatre



Block table

Glatt 1

up to 36 persons | 60 m²



24

16

45

20



Projector and screen
57" LCD-Screen



Sound system

Glatt 2

up to 36 persons | 49 m²



18

12

36

16



57" LCD-Screen



Sound via LCD screen

Glatt 3

up to 120 persons | 186 m²



36

24

120

30



Projector and screen



Sound system

Rhein 1

up to 27 persons | 41 m²



12

8

27

10



57" LCD-Screen



Sound via LCD screen

Our meeting rooms

unique and versatile with natural daylight



Classroom



U shape



Theatre



Block table

Rhein 2

up to 100 persons | 149 m²



40

22

100

Double projection

Sound system

Rhein 3

up to 100 persons | 144 m²



42

26

100

Projector

Sound system

Rhein 4

up to 27 persons | 38 m²



12

8

27

57" LCD-Screen

Sound system

Rhein 5

up to 100 persons | 128 m²



-

-

-

10

Projector

Sound via screen

Our meeting rooms

unique and versatile with natural daylight



Classroom



U shape



Theatre



Block table

Rhein 6

up to 100 persons | 124 m²



42

26

100

 Projector

 Sound system

Säulensaal 2

up to 80 persons | 91 m²



22

20

80

 Projector

 Sound system

Säulensaal 3

up to 10 persons | 29 m²



-

-

-

10

 57" LCD-Screen

 Sound via LCD screen

Säulensaal 4

up to 10 persons | 29 m²




-

-

-

10

 57" LCD-Screen

 Sound via LCD screen

Our meeting rooms

unique and versatile with natural daylight



Classroom



U shape



Theatre



Block table

Säulensaal 5

up to 30 persons | 52 m²



12

14

30

14



Projector and screen



on request

Säulensaal 6

up to 6 persons | 18 m²



-

-

-

6



57" LCD-Screen



Sound via LCD screen

Säulensaal 7

up to 10 persons | 26 m²



-

-

-

10



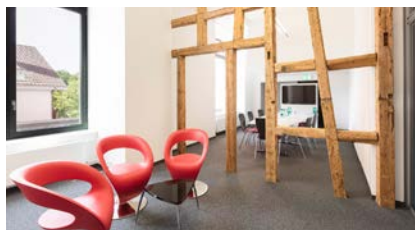
57" LCD-Screen



Sound via LCD screen

Säulensaal 8

up to 10 persons | 38 m²



-

-

-

10



57" LCD-Screen



Sound via LCD screen

Our meeting rooms

unique and versatile with natural daylight



Classroom



U shape



Theatre



Block table

Lettensaal 1

up to 20 persons | 55 m²



14

12

20

-



57" LCD-Screen



Sound system

Lettensaal 2

up to 60 persons | 131 m²



30

20

64

-



Projector and screen



Sound system

Lettensaal 3

up to 15 persons | 22 m²



8

8

15

10



57" LCD-Screen



Sound system

Lettensaal 4

up to 6 persons | 14 m²



-

-

6

4



57" LCD-Screen



Sound system

Our meeting rooms

unique and versatile with natural daylight



Classroom



U shape



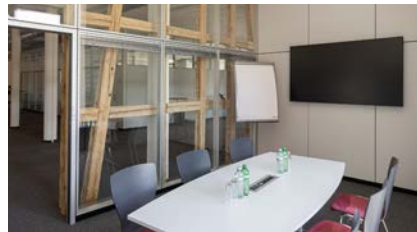
Theatre



Block table

Lettensaal 5

up to 6 persons | 16 m²



-

-

6

-



57" LCD-Screen



Sound system

Lettensaal 6

up to 16 persons | 32 m²



-

-

16

8



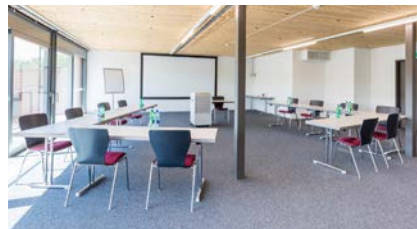
Projector and screen



Sound system

Lodge 1

up to 80 persons | 145 m²



36

22

80

20



Projector and screen



Sound system

Lodge 2

up to 80 persons | 145 m²



36

22

80

20



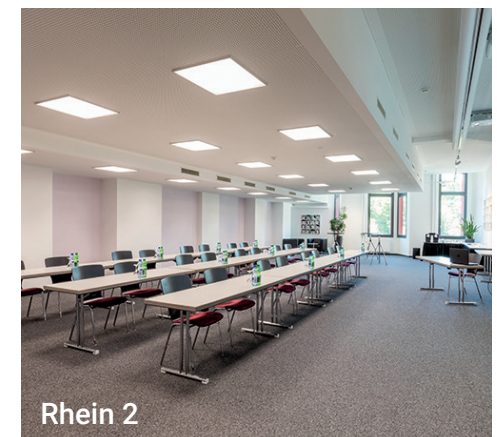
Projector and screen



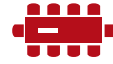
Sound system

m²

| Meeting room | Size | Classroom | U Shape | Theatre | Block table | Banquet |
|--------------------------|--------------------|-----------|---------|---------|-------------|---------|
| Spinnereisaal 1+2 | 310 m ² | 130 | - | 335 | - | - |
| Spinnereisaal 1 | 128 m ² | 36 | 20 | 95 | 30 | - |
| Spinnereisaal 2 | 189 m ² | 72 | 28 | 170 | 50 | - |
| Glatt 1+2 | 109 m ² | 48 | 24 | 88 | t.b.d. | - |
| Glatt 1 | 60 m ² | 24 | 16 | 45 | 20 | - |
| Glatt 2 | 49 m ² | 18 | 12 | 36 | 16 | - |
| Glatt 3 | 186 m ² | 36 | 24 | 120 | 30 | - |
| Rhein 1 | 41 m ² | 12 | 8 | 27 | 10 | - |
| Rhein 2 | 149 m ² | 40 | 22 | 100 | - | - |
| Rhein 3 | 144 m ² | 42 | 26 | 100 | - | - |
| Rhein 4 | 38 m ² | 12 | 8 | 27 | 10 | - |
| Rhein 5 | 128 m ² | 42 | 26 | 100 | - | - |
| Rhein 6 | 124 m ² | 42 | 26 | 100 | - | - |
| Säulensaal 2 | 91 m ² | 22 | 20 | 80 | - | - |
| Säulensaal 3 | 29 m ² | - | - | - | 10 | - |
| Säulensaal 4 | 29 m ² | - | - | - | 10 | - |
| Säulensaal 5 | 52 m ² | 12 | 14 | 30 | 14 | - |
| Säulensaal 6 | 18 m ² | - | - | - | 6 | - |
| Säulensaal 7 | 26 m ² | - | - | - | 10 | - |
| Säulensaal 8 | 38 m ² | - | - | - | 10 | - |



m²



| Meeting room | Size | Classroom | U Shape | Theatre | Block table | Banquet |
|-----------------------|--------------------|-----------|---------|---------|-------------|---------|
| Lodge 1 | 145 m ² | 36 | 22 | 80 | 20 | - |
| Lodge 2 | 145 m ² | 36 | 22 | 80 | 20 | - |
| Kämmereisaal | 506 m ² | 140 | - | 450 | - | 320 |
| Car exhibition | 840 m ² | 20 | 20 | 120 | - | - |
| Lettensaal 1 | 55 m ² | 14 | 12 | 20 | 12 | - |
| Lettensaal 2 | 131 m ² | 30 | 20 | 64 | - | - |
| Lettensaal 3 | 22 m ² | 8 | 8 | 15 | 10 | - |
| Lettensaal 4 | 14 m ² | - | - | 6 | 4 | - |
| Lettensaal 5 | 16 m ² | - | - | 6 | - | - |
| Lettensaal 6 | 32 m ² | - | - | 16 | 8 | - |



Kämmereisaal

up to 450 persons | 506 m²



320



| | | | |
|-----|---|-----|---|
| 140 | - | 450 | - |
|-----|---|-----|---|



Projector and screen



Integrated 4 channel microphone system, sound system

Overview/ Meeting rooms



Spinnereisaal 2



Glatt 2



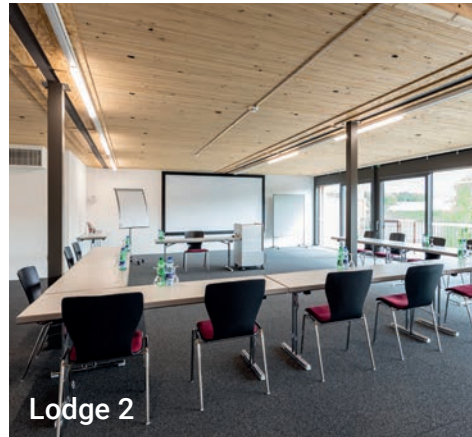
Säulensaal 5



Spinnereisaal 1+2



Spinnereisaal 1



Lodge 2



Glatt 1



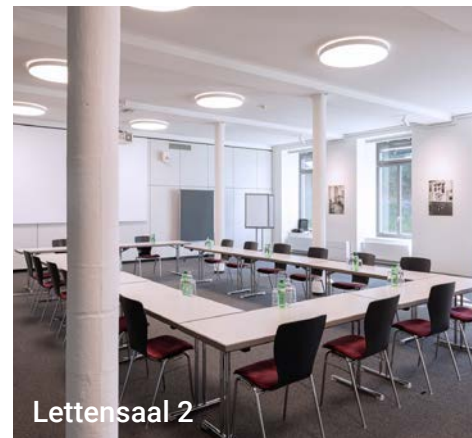
Lettensaal 6



Glatt 3



Säulensaal 4



Lettensaal 2



Rhein 2

Culinary delights



Enjoy authentic Thai cuisine at the riverside's «Thaigarden» situated at the elegant glass pavilion. From delicious Currys to tasteful hot wok dishes, you can indulge in a variety of flavours and ingredients.

Restaurant «Kesselhaus» and «Turbinenstube» offer Swiss traditional cuisine with a modern touch. We use seasonal products from local suppliers to create delicious meals served in a homely atmosphere.



Enjoy our Chef's business dinner menu for CHF 60.00 per person in our restaurant Kesselhaus oder Thaigarden.

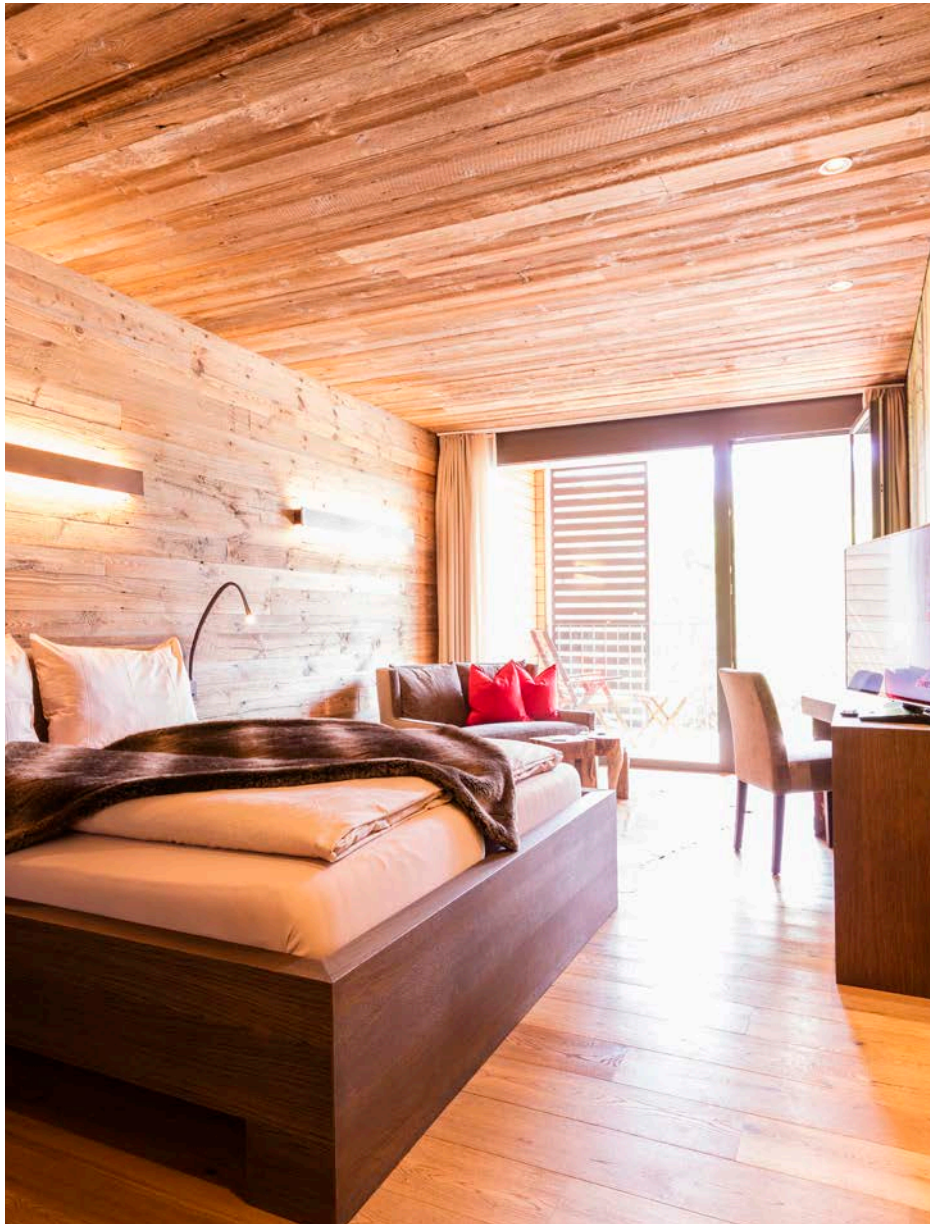
Or choose an individual menu out of our banquet menu selection on request.

Exklusiv

«Thaigarden» and «Turbinenstube» can be hired exclusively for our private or corporate event.

We look forward to your enquiry!

Sleep in the countryside



The riverside offers 96 hotel rooms – 44 modern spacious rooms in the main building which offer a view of the beautiful countryside. Additionally there are 52 Lodge rooms in the newly built riverlodge building.

The Lodge rooms (38 m²) feature natural materials, wooden elements and a balcony overlooking the river Glatt.



96 hotel rooms

- 52 Lodge rooms, 38 m²
- 38 Comfort rooms, 36 m²
- 4 Deluxe rooms, 45m²
- 2 Junior Suites, 55 m²

Our room rates in connection with a meeting reservation are between CHF 175.00 - 245.00 per night and room including breakfast.

Active or relaxing – your individual team activity



Our exclusive location in the countryside helps to create a varied meeting agenda with numerous team activities in and around the hotel.

Enjoy the idyllic Zurich lowlands by bike, discover the exciting world of dragon boat racing or hit the bull's eye during a dynamic archery lesson.

We offer a wide range of tailor-made team building activities in cooperation with professional event agencies. Get in touch with us!



Team activity

Search activities by category on our website riverside.ch



Spinnerei-Lettenstrasse
CH-8192 Zweidlen-Glattfelden

Tel +41 43 500 92 92
Fax +41 43 500 92 99



riverside

Seminar- und Eventhotel

seminare@riverside.ch
www.riverside.ch